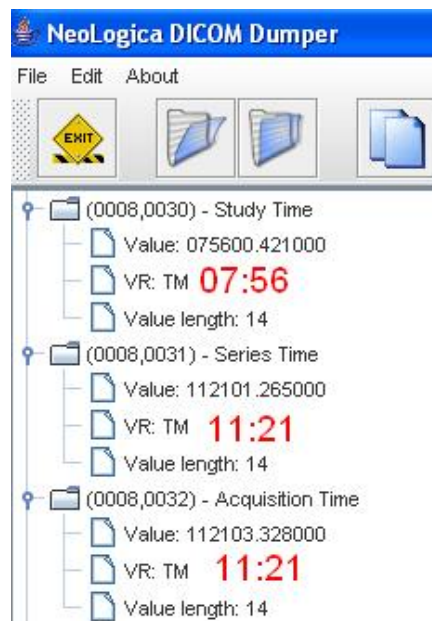


SCENARIO: All workstations and the PACS display the identical time; however, the study time displayed for Bone Scans on the PACS is approximately three hours earlier than the actual time the images were acquired on the workstation. For example, the PACS might indicate a study time of 8 AM for a patient scanned at 11 AM.

EXPLANATION: Be advised that scenario can happen on any modality and any PACS, but is most common with Nuclear Medicine Bone Scans.

The picture below shows a partial dump of a DICOM header using DICOM Dumper. I added the text in **red** for emphasis. According to the DICOM tags....

- The patient was registered in the HIS/RIS at 7:56.
 - This is DICOM tag [0008,0030] **Study Time**.
- The patient's images were acquired 11:21.
 - This is DICOM tag [0008,0032] **Acquisition Time**.



"Study Time" indicates when the patient was registered for an exam, while "Acquisition Time" indicates when the images were acquired.

A three hour difference is common for a Nuclear Medicine Bone Scan because after a patient is injected with a radioisotope, then they must wait three hours for the radioactivity to distribute itself throughout their body before images can be acquired.
